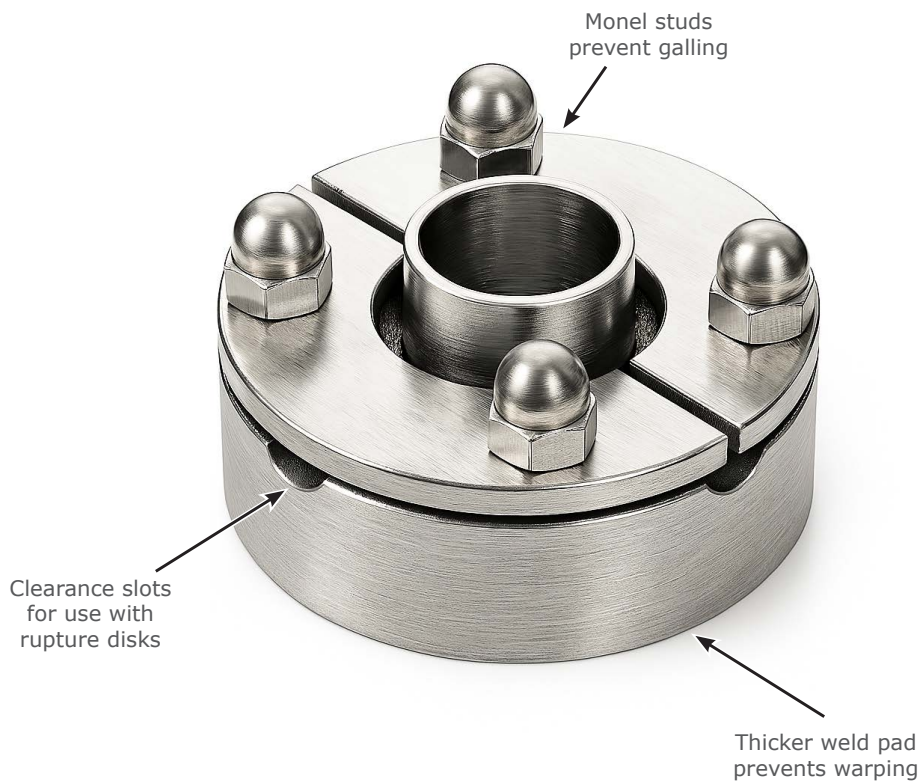


## The Close Couple Aseptic Connector

### Features

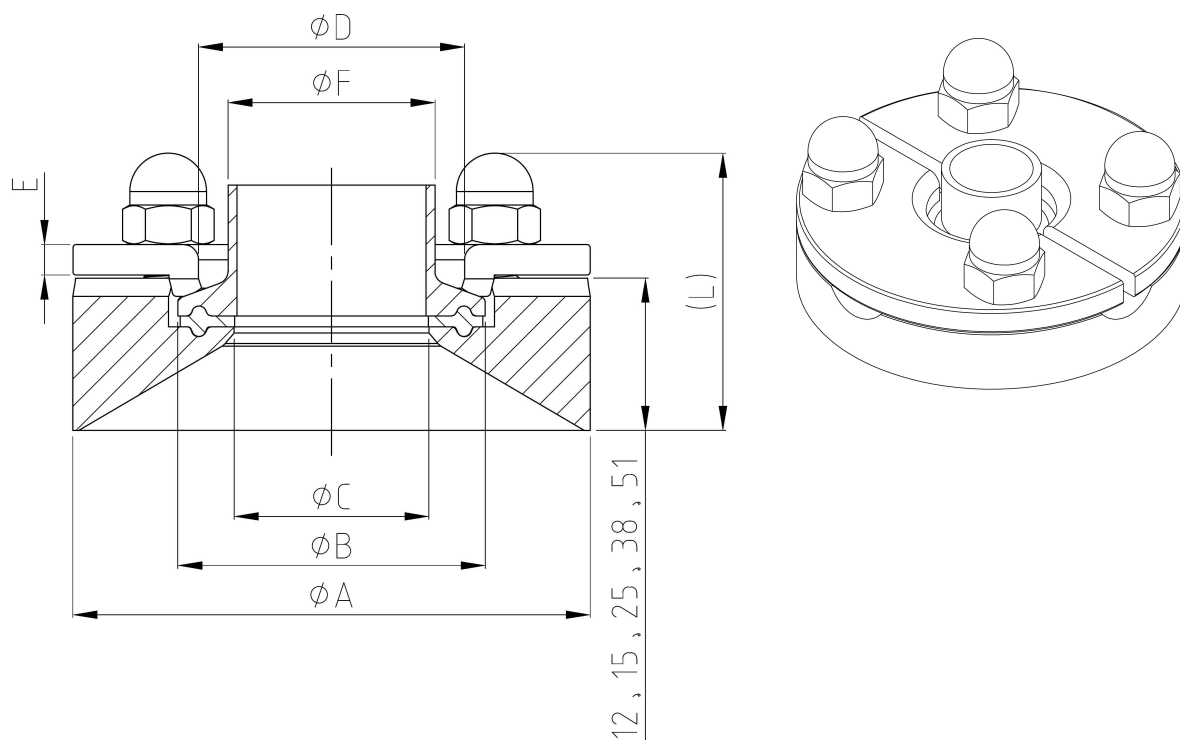
- Clean, aseptic design
- Patented compound gasket
- Easy to place, seal, inspect
- Monel studs
- Flush mount design
- Large outer diameter



### Specifications

Material	316L/304
Surface Finish	Mechanical Polishing Surface Finish: Ra 0.5 to 0.8 $\mu\text{m}$
Sizes	3A : 3/4"~4" / DIN : DN10~DN100
Thickness	25 standard height, custom heights available upon request
Connection	Weld-in body with tri-clamp component connection
Design Pressure	-14.5 to 101.5 psi (Maximum working pressure is determined by the design pressure of the gasket being used in the assembly.)
Design Temperature	-20 to 160°C (Maximum working temperature is determined by the design pressure of the gasket being used in the assembly.)
Marking	Each connector is marked for full material traceability
ISO	All product and procedures are governed by our ISO Quality Assurance Program
Standards	BPE, CE-PED, ASME

Please contact our Customer Service Department for any non-standard valve requirement 886-4-8876919



**Inch Size Table**

SIZE	$\phi A$	$\phi B$	$\phi C$	$\phi D$	E	$\phi F$	(L)12	(L)15	(L)25	(L)38	(L)51
3/4"	55	25	15.75	20	5	19.05	29	–	42	55	68
1.0"	85	50.5	22.1	43.8	5	25.4	32	–	45	58	71
1.5"	85	50.5	34.8	43.8	5	38.1	32	–	45	58	71
2.0"	100	64	47.5	55	6	50.8	–	36	49	62	75
2.5"	112	77.5	60.2	65.5	9.5	63.5	–	39.5	52.5	65.5	78.5
3.0"	131	91	72.9	78	10	76.2	–	40	53	66	79
4.0"	170	119	97.4	105	12	101.6	–	42	55	68	81

**DIN Size Table**

SIZE	$\phi A$	$\phi B$	$\phi C$	$\phi D$	E	$\phi F$	(L)12	(L)15	(L)25	(L)38	(L)51
DN10	70	34	10	23.5	5	13	32	–	45	58	71
DN15	70	34	16	23.5	5	19	32	–	45	58	71
DN20	70	34	20	23.5	5	23	32	–	45	58	71
DN25	85	50.5	26	43.8	5	29	32	–	45	58	71
DN32	85	50.5	32	43.8	5	35	32	–	45	58	71
DN40	85	50.5	38	43.8	5	41	32	–	45	58	71
DN50	100	64	50	55	6	53	–	36	49	62	75
DN65	131	91	66	78	10	70	–	40	53	66	79
DN80	146	106	81	93	10	85	–	40	53	66	79
DN100	170	119	100	105	12	104	–	42	55	68	81



*Aseptic Connector, Tank Connected*

# A Flexible Solution

## Flexible Design

Aseptic Connectors are compatible with a wide range of TC-equipped equipment and can also be sealed with blind caps without compromising system sterility.

To accommodate future needs, many customers choose to pre-weld additional connectors and temporarily seal the unused ports with blind caps.

This approach offers significant savings in time and cost compared to modifying the tank and welding new connections later.

# Focused on Aseptic Design

## Tank Connected or In-Line

Aseptic Connectors are available in both tank-mounted and in-line configurations.

With the growing demand for process traceability and control, combining Aseptic Connectors with the CSE closed sampling system offers an ideal solution for comprehensive monitoring and management.

*In-line Aseptic Connector with integrated CSE closed sampling system*

*In-line Aseptic Connector*

*Tank-mounted Aseptic Connector with Aseptic Valve*

*Tank-mounted Aseptic Connector with Sensor*

*Tank-mounted Aseptic Connector with integrated septum-type closed sampling system.*

